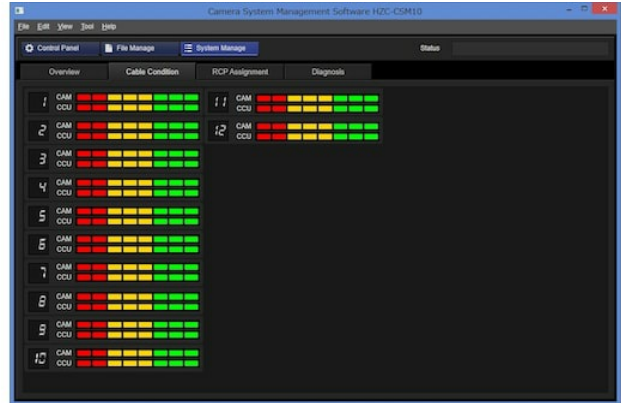


## HZC-CSM10

Master Setup Unit (MSU) PC Software



### Overview

#### **MSU Software for easy multiple system camera configuration and maintenance**

The HZC-CSM10 is a Windows-based Master Setup Unit (MSU) application software for controlling a system camera system from a PC. The HZC-CSM10 has the same features as a hardware-based MSU, offering camera control, optical level display, file management, remote control panel (RCP) assignment and diagnosis. The HZC-CSM10 acts as a software client to a master hardware MSU for full system stability. It is compatible with every Sony hardware MSU, including the MSU-1000 and MSU-1500.

#### **Activation key for pre-installed software.**

### Features

#### **Windows PC-based application**

The HZC-CSM10 is a Windows PC-based application. System requirements are Windows 7/8.1/10 (32-bits/64-bits), and 2 GBytes of RAM.

#### **Compatible with HDC Series and HSC Series system cameras**

The HZC-CSM10 is designed to work with HDC Series and HSC Series system cameras, but does not support HXC Series cameras.

## User-friendly GUI offers RCP control

The HZC-CSM10 GUI controls any parameter of the system camera. It offers a powerful and easy-to-use GUI for remote control panel (RCP) to camera assignment.

## File management

The HZC-CSM10 enables file transfer among cameras from the PC for very fast adjustment of a complete multi-camera system.

## Diagnosis and optical level displays

System status information is available from the PC-based MSU for extra safety.

## HDR operation support

The HDR related items can be controlled and/or observed from HZC-CSM10 such as MSU-1000/1500.

## Related products



### HXC-FB80

Three 2/3-inch Exmor™ CMOS sensor  
HD colour studio camera



### HDC-P31

HD compact POV system camera with enhanced remote features and advanced HDR workflows

## Gallery

