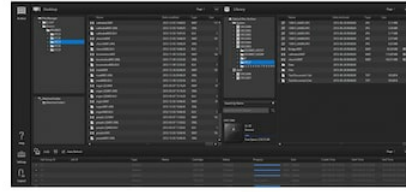


## File Manager2

\*Please contact your local sales representative for details.



### Overview

#### **Control for Optical Disc Archive PetaSite scalable library and ODS-L10 mini robotic library**

After File Manager2 software is installed on a host computer, all operations are controlled with a web-based GUI from each client computer. It uses a simple Drag & Drop operation to archive and retrieve files and provides the opportunity for the user to add text metadata when archiving files.

File Manager2 software gives you the ability to archive/retrieve your content to/from ODS USB Drive series, ODS-L10 and ODS-L30M from a PC.

In addition, offline media searching is possible because FM2 records the file information to its own database.

### Features

#### **Control all library operations with a simple web-based GUI**

After the File Manager2 software is installed on a host computer, all operations can be controlled with a web-based GUI, from each client computer. Using a simple drag & drop functionality to archive and retrieve files, File Manager2 also provides the opportunity for the user to add text metadata when archiving files.

#### **Categorisation by cartridge**

In the case of ODS-L10, it contains up to 10 cartridges as online

(total 15TB with ten ODC-1500R), and you can use different cartridges per category or user. Placeholder to archive together multiple files from different folders and add text metadata when archiving files.

### Support all line-ups

File Manager2 can control both USB type standalone drive (ODS-D55U or ODS-D77U) and libraries (ODS-L10 or ODS-L30M).

### Simplest solution for shelf archive

File Manager2 is able to search your cartridge even it's on shelves, as well as online cartridge in ODS-L10 or ODS-L30M.

## Specifications

File Manager mode	
Processor	CPU Intel Core i5 3 GHz or higher
Memory	8 GB
HDD capacity	200 GB (Additional capacity of 4 TB/drive is required if archiving files from the local HDD or retrieving files to the local HDD)
OS	<p><b>ODS-L10 or USB drive unit connection:</b> Windows 10 64-bit</p> <p><b>ODS-L30M connection:</b> Windows Server 2012 Windows Server 2012 R2 Windows Server 2016</p>

Interface

**ODS-L10 connection:**

Ethernet × 2 ports (for PC client connection and ODS-L10 connection) USB 3.0 ports (one for each drive)

**ODS-L30M connection:**

Ethernet × 1 port (for PC client connection and ODS-L30M connection) Fibre Channel HBA (Host Bus Adapter)

**Drive unit direct connection:**

Ethernet × 1 port (for PC client connection)  
USB 3.0 ports (one for each drive)

File Server mode	
Processor	CPU Intel Core i5 3 GHz or higher
Memory	8 GB
HDD capacity	200 GB + 4 TB/drive
OS	Windows Server 2012 Windows Server 2012 R2 Windows Server 2016
Interface	Same as File Manager mode

## Related products



### ODS-D55U

Optical Disc Archive standalone drive unit with transfer speeds 330 Mbps (read) and 210 Mbps (write-once disc) or 130 Mbps (rewritable disc)



### ODS-D77UA

ODS-D77UA has very high transfer speeds. Read is 1.1Gbps. Write-once is 440 Mbps and Rewritable is 160 Mbps (verify on). Performance varies based on type of cartridge.



### ODS-L30M

\*Please contact your local sales representative for details.



### ODS-L60E

\*Please contact your local sales representative for details.



### ODS-L100E

\*Please contact your local sales representative for details.



### Optical Disc Archive Software (Driver)

\*Please contact your local sales representative for details.



### ODS-D280U

Optical Disc Archive stand-alone drive with very high transfer speeds of 1Gbps write (verify on) and 2Gbps read using ODC-3300R Generation 2 cartridge



### ODS-D280F

Optical Disc Archive fibre channel drive unit for the ODS-L30M/L60E/L100E PetaSite scalable library with very high transfer speeds of 1Gbps write (verify on) and 2Gbps read using ODC-3300R Generation 2 cartridge



### ODS-D77F

Optical Disc Archive fibre channel drive unit for ODS-L30M PetaSite scalable library with transfer speeds up to 1,150 Mbps (read) and 780



### File Server mode License for FM2

\*Please contact your local sales



### ODS-D380F

\*Please contact your local sales representative for details.



### ODS-D380U

\*Please contact your local sales representative for details.

Mbps (write-once  
disc) or 310 Mbps  
(rewritable disc)

representative for  
details.

## Gallery

