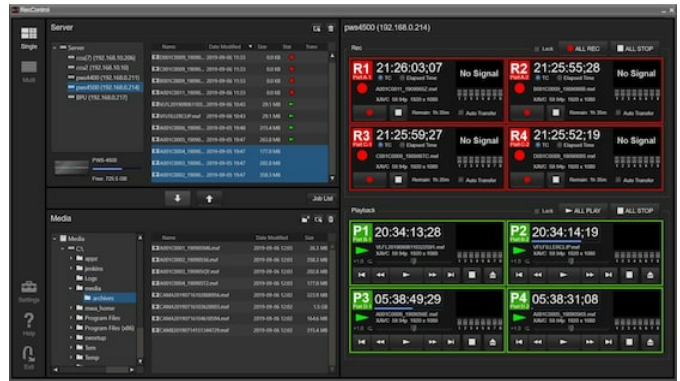


PWA-RCT1

Recording Control Software for
PWS-4500, HKCU-REC55 and
HKCU-REC50



Overview

Flexibility and control for the PWS-4500, HKCU-REC55 and HKCU-REC50

The PWA-RCT1 is a software for running applications that provides useful method for controlling multiple units of the PWS-4500 4K/HD Live Production Server, and HKCU-REC55/REC50 CCU Recording Option* – triggering rec/stop/play/file transfer from a single PC with an intuitively operational GUI.

The PWA-RCT1 adds increased operational flexibility to both the PWS-4500 and HKCU-REC55/REC50, so that it can be offered as an easy-to-use multi-port 4K/HD production recorder for a wide variety of production applications.

* PWAL-RCT50 is required to use HKCU-REC55/REC50.

Features

Simple and intuitive control for multiple channel recording

Simple and intuitive operation for multiple channel recording with both PWS-4500 and HKCU REC55/REC50 simultaneously using one application.

Clip management and file transfer functions

The software offers clip list management and file transfers to external media or network storage.

Related products



HDC-4300

4K/HD System Camera



PMW-F55LIVE

Super 35mm 4K CMOS sensor compact CineAlta camera records HD/2K/4K on SxS memory plus 16-bit RAW 2K/4K output



HDC-3500

Three 2/3-inch 4K CMOS sensors portable system camera for fibre operation



HDC-4800

UHFR 4K/HD Camera System



HDC-5500

High performance three 2/3-inch 4K CMOS sensor portable system camera with direct 4K output



HDCU-3500

IP-ready Camera Control Unit (CCU) for HDC-3500 4K/HD system camera



HDCU-5000

Camera Control Unit (CCU) for HDC-5500 and HDC-3500/3100 series system cameras



HDCU-5500

IP-ready Camera Control Unit (CCU) for HDC-5500 4K/HD system camera



PWAL-RCT50

CCU recording control option for PWA-RCT1



HKCU-REC55

Recording option for HDCU-5500 and HDCU-3500 CCU

