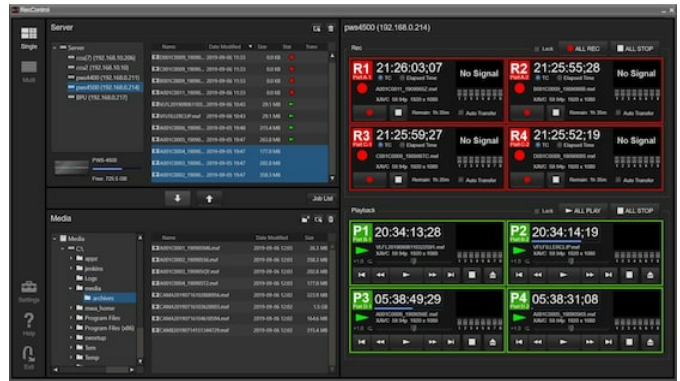


## PWA-RCT1

Recording Control Software for  
PWS-4500, HKCU-REC55 and  
HKCU-REC50



### Overview

#### **Flexibility and control for the PWS-4500, HKCU-REC55 and HKCU-REC50**

The PWA-RCT1 is a software for running applications that provides useful method for controlling multiple units of the PWS-4500 4K/HD Live Production Server, and HKCU-REC55/REC50 CCU Recording Option\* – triggering rec/stop/play/file transfer from a single PC with an intuitively operational GUI.

The PWA-RCT1 adds increased operational flexibility to both the PWS-4500 and HKCU-REC55/REC50, so that it can be offered as an easy-to-use multi-port 4K/HD production recorder for a wide variety of production applications.

\* PWAL-RCT50 is required to use HKCU-REC55/REC50.

### Features

#### **Simple and intuitive control for multiple channel recording**

Simple and intuitive operation for multiple channel recording with both PWS-4500 and HKCU REC55/REC50 simultaneously using one application.

#### **Clip management and file transfer functions**

The software offers clip list management and file transfers to external media or network storage.

## Related products



### HDC-4300

4K/HD System Camera



### PWS-100TD1

Tape Digitizing Station



### PMW-F55LIVE

Super 35mm 4K CMOS sensor compact CineAlta camera records HD/2K/4K on SxS memory plus 16-bit RAW 2K/4K output



### HDC-3500

Three 2/3-inch 4K CMOS sensors portable system camera for fibre operation



### HDC-5500

High performance three 2/3-inch 4K CMOS sensor portable system camera with direct 4K output



### HDCU-3500

IP-ready Camera Control Unit (CCU) for HDC-3500 4K/HD system camera



### HDCU-5000

Camera Control Unit (CCU) for HDC-5500 and HDC-3500/3100 series system cameras



### HDCU-5500

IP-ready Camera Control Unit (CCU) for HDC-5500 4K/HD system camera



### PWAL-RCT50

CCU recording control option for PWA-RCT1



### HKCU-REC55

Recording option for HDCU-5500 and HDCU-3500 CCU

## Gallery

