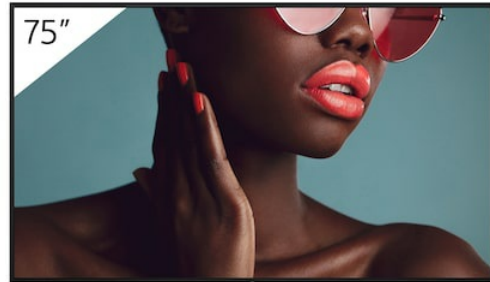


## FW-75BZ40L

75" Exceptionally bright 4K HDR professional display with unique Deep Black Non-Glare technology



### Overview

#### **Superlative picture quality. Made for professionals.**

Engineered to perform flawlessly in demanding retail, corporate and educational environments, the FW-75BZ40L is the truly professional display. It's packed with Sony innovation – including latest Deep Black Non-Glare technology – for impressively bright, high-contrast 4K HDR images with sumptuous colours and exquisite detail. Pro-friendly features simplify integration, easy operation and seamless content sharing in today's connected AV environments. And with generous customisation options, the FW-75BZ40L is the premium LED display that fits right in with your business needs.

### Features

#### **Deep Black Non-Glare**

Featured exclusively on BRAVIA BZ40L, Sony's Deep Black Non-Glare Coating combines anti-glare and low-reflection technologies. Reducing reflections and boosting contrast, it's the key to dynamic visuals bursting with true-to-life colour and detail that inspire everyone, from corporate visitors and staff to shoppers and students.

#### **Exquisite images that always stand out**

Our 75" FW-75BZ40L grabs your audience's attention with extremely high 700 nit screen brightness for punchy, high-impact

visuals that are always seen clearly. Advanced Sony picture processing technologies ensure your content looks its very best. The panel's extra-wide viewing angle ensures that everyone in the room can enjoy clear, bright images wherever they're positioned.

### **Richer, more natural colour**

Sony's power-packed 4K HDR Processor X1 and TRILUMINOS Pro technology faithfully reproduces a phenomenal range of rich, true-to-life colours.

### **Finer detail**

4K X-Reality PRO processing upscales pictures closer to true 4K quality. Images are sharpened and refined in real time, revealing extra detail from lower-resolution picture sources.

### **Smoother movement**

Motionflow XR ensures smoother, more natural reproduction of rapidly-moving on-screen images.

### **Installation flexibility to suit every environment**

The sleek, minimal design of the FW-75BZ40L Series brings impeccable style to any business environment. The display's elegant lines are further enhanced by practical touches for seamless integration in retail stores, colleges and corporate workspaces.

### **Wall-Mount Adjuster**

BRAVIA comes supplied with a Wall-Mount Adjuster, giving extra flexibility for mounting the display centrally in portrait or landscape orientation.

### **Side Mounted interfaces**

Signal connections, networking and other interfaces are conveniently side mounted for easy installation and access when the display's in portrait position.

## **Discreet Logo**

The Sony logo is discreetly positioned on the edge of the display's bezel – with nothing distracting your audience from immersive images.

## **Landscape, Portrait and Tilt**

Install BRAVIA in portrait or landscape orientation to suit any corporate or retail space. The display can also be tilted at an angle for even greater flexibility.

## **Round the clock reliability**

Business never sleeps: BRAVIA is engineered for dependable 24/7 operation in the most challenging corporate and commercial environments.

## **Special settings for professional use**

Pro Settings mode makes doing business even easier, allowing you to customise BRAVIA settings and operating modes to suit the demands of corporate or retail environments. Disable input or remote control functions, schedule on/off times, remove labels and block buttons to avoid tampering when the screen's being used in public spaces. Customise and store display settings, then copy them easily from display to display via USB flash memory.

## **Get great pictures fast**

Forget fiddling with display settings – focus on getting amazing results without fuss. One Step Setting offers presets tuned to your environment including meeting room, vivid signage, natural signage and graphics. Just pick a preset: BRAVIA instantly configures picture mode, input, control settings and more.

## **Easy multi-screen setup**

Configuring multiple screens for large display applications is easier than ever. The Multi Display Setting (MDS) app helps you create stunning video walls with multiple BRAVIA displays 'tiled' together.

## **Easy integration**

FW-75BZ40L is made for today's connected world. There's seamless support for today's leading automation and control platforms, while open APIs simplify integration with other vendor solutions.

## **Large 32GB internal storage**

The internal memory on some other displays is eaten up by the operating system, leaving little space for your own apps and content. FW-75BZ40L doubles internal storage from 16GB to a generous 32GB – giving loads more room on board to hold apps, photos, videos and digital signage.

## **Signage made simple**

Informing and guiding visitors with digital signage in retail stores and corporate spaces has never been simpler. Built-in support for HTML5 makes it easy to display interactive signage content on BRAVIA without the need for a dedicated set-top box, media player or PC. On-board BRAVIA Signage Free (BSF) software automatically plays out HTML content, video and photos when a USB stick memory is slipped into BRAVIA. It's that simple.

## **Wireless screen mirroring**

Easily mirror content wirelessly from handheld device onto BRAVIA with in-built support for Apple AirPlay and Google Chromecast.

## **Meet more easily**

Get Google Meet from Google Play Store, and pair BRAVIA with a compatible webcam for easy video meetings.

## **With BRAVIA, sustainability in every scene**

With growing demand for ever larger display screens, there is also the risk of greater resource and energy use. However, Sony's sustainability commitments are realizing efficiency gains from product development right through to customers viewing screens.

## The FW-75BZ40L is registered EPEAT Bronze in 23 countries

EPEAT is the world's premier global ecolabel for electronics. EPEAT combines rigorous & comprehensive sustainability criteria with ongoing independent third-party verification for all products in the EPEAT online registry. EPEAT Bronze tier indicates products meet a broad and robust set of criteria, making them a more sustainable purchasing option.

See [EPEAT Registry \(https://www.epeat.net/\)](https://www.epeat.net/) for specific models. Registration status and tier levels may vary by country

### Specifications

#### General Features

|  |                              |
|--|------------------------------|
| Screen Size                            | 75"                          |
| Brightness (cd/m <sup>2</sup> )        | 700                          |
| Contrast Ratio                         | 1200:1                       |
| Dynamic Contrast Ratio                 | 600,000:1                    |
| Response Time (ms)                     | 8                            |
| Display Resolution (H x V, pixels)     | 3840 x 2160                  |
| HDR (High Dynamic Range) Compatibility | Yes (HDR10,HLG,Dolby Vision) |
| Aspect Ratio                           | 16:9                         |

|                             |     |
|-----------------------------|-----|
| Portrait/Tilt Compatibility | Yes |
|-----------------------------|-----|

## Display Features

|              |               |
|--------------|---------------|
| Dimming Type | Frame Dimming |
|--------------|---------------|

|                |     |
|----------------|-----|
| Display Device | LCD |
|----------------|-----|

|            |     |
|------------|-----|
| Panel Type | IPS |
|------------|-----|

|                |            |
|----------------|------------|
| Backlight Type | Direct LED |
|----------------|------------|

|                    |                |
|--------------------|----------------|
| TRILUMINOS Display | TRILUMINOS PRO |
|--------------------|----------------|

|                       |     |
|-----------------------|-----|
| Colour Gamut (DCI-P3) | 92% |
|-----------------------|-----|

|                   |                     |
|-------------------|---------------------|
| Picture Processor | 4K HDR Processor X1 |
|-------------------|---------------------|

|                |      |
|----------------|------|
| Operation Time | 24/7 |
|----------------|------|

|                              |     |
|------------------------------|-----|
| Deep Black Non-Glare Coating | Yes |
|------------------------------|-----|

|          |     |
|----------|-----|
| Haze (%) | 47% |
|----------|-----|

|                            |                               |
|----------------------------|-------------------------------|
| Viewing Angle (Right/Left) | 178 (89 / 89) degree (CR >10) |
|----------------------------|-------------------------------|

|                         |                               |
|-------------------------|-------------------------------|
| Viewing Angle (Up/Down) | 178 (89 / 89) degree (CR >10) |
|-------------------------|-------------------------------|

## Video Specification

|                  |  |
|------------------|--|
| Video Processing | 4K X-Reality PRO   |
| Motion Enhancer  | Motionflow XR 240 (Native 60Hz)  |
| HDMI Signal      | 4096x2160p(24,60Hz),<br>3840x2160p(24,30,60Hz),<br>1080p(24,30,60Hz),<br>1080i(60Hz),<br>720p(24,30,60Hz),<br>480p |

## Audio Specification

|                    |             |
|--------------------|-------------|
| Speaker Position   | Down Firing |
| Audio Power Output | 10W + 10W   |

## Professional Features

|                   |            |
|-------------------|------------|
| Pro Mode          | Yes        |
| HDMI Auto Wake-Up | Yes        |
| HTML5 Platform    | Yes        |
| Multicast/IPTV    | Yes        |
| Operating System  | Android TV |

|                       |      |
|-----------------------|------|
| On-board Storage (GB) | 32GB |
|-----------------------|------|

## Network Specification

|              |     |
|--------------|-----|
| Wi-Fi Direct | Yes |
|--------------|-----|

|                 |     |
|-----------------|-----|
| Wi-Fi Certified | Yes |
|-----------------|-----|

|              |            |
|--------------|------------|
| Wireless LAN | Integrated |
|--------------|------------|

## Convenience Features

|                     |  |
|---------------------|--|
| USB Playback Codecs | MPEG1:MPEG1 / MPEG2PS:MPEG2 / MPEG2TS<br>(HDV,AVCHD):MPEG2,AVC / MP4 (XAVCS):AVC,MPEG4,HEVC / AVI:Xvid,MotionJpeg / ASF (WMV):VC1 / MOV:AVC,MPEG4,MotionJpeg / MKV:Xvid,AVC,MPEG4,VP8.HEVC / WEBM:VP8 / 3GPP:MPEG4,AVC / MP3 / ASF (WMA) / LPCM / WAV / MP4AAC / FLAC / JPEG |
|---------------------|--|

|                 |     |
|-----------------|-----|
| On Screen Clock | Yes |
|-----------------|-----|

|             |     |
|-------------|-----|
| Sleep Timer | Yes |
|-------------|-----|

|              |     |
|--------------|-----|
| On/Off Timer | Yes |
|--------------|-----|



|                     |     |
|---------------------|-----|
| Chromecast Built-In | Yes |
|---------------------|-----|

|               |     |
|---------------|-----|
| Apple AirPlay | Yes |
|---------------|-----|

## Control Specifications

|            |     |
|------------|-----|
| IP Control | Yes |
|------------|-----|

|                 |     |
|-----------------|-----|
| RS-232C Control | Yes |
|-----------------|-----|

|          |     |
|----------|-----|
| HDMI-CEC | Yes |
|----------|-----|

## Inputs and Outputs

|      |                           |
|------|---------------------------|
| HDCP | HDCP2.3 (for HDMI1/2/3/4) |
|------|---------------------------|

|                           |                     |
|---------------------------|---------------------|
| Composite Video Input (s) | 1 (Side, Mini jack) |
|---------------------------|---------------------|

|                   |            |
|-------------------|------------|
| HDMI Inputs Total | 4 (4 Side) |
|-------------------|------------|

|                                |                            |
|--------------------------------|----------------------------|
| Analog Audio Input (s) (Total) | 1 (Side Analog Conversion) |
|--------------------------------|----------------------------|

|                          |          |
|--------------------------|----------|
| Digital Audio Output (s) | 1 (Side) |
|--------------------------|----------|

|           |          |
|-----------|----------|
| USB Ports | 2 (Side) |
|-----------|----------|

|                 |          |
|-----------------|----------|
| Ethernet Inputs | 1 (Side) |
|-----------------|----------|

## Design Features

|              |       |
|--------------|-------|
| Frame Colour | Black |
|--------------|-------|

|                               |     |
|-------------------------------|-----|
| VESA® Hole Spacing Compatible | Yes |
|-------------------------------|-----|

|                          |                                     |
|--------------------------|-------------------------------------|
| VESA® Hole Pitch (W x H) | 300 x 300 mm / 11 7/8 x 11 7/8 inch |
|--------------------------|-------------------------------------|

## Environment Specifications

|                         |       |
|-------------------------|-------|
| Rated Power Consumption | 299 W |
|-------------------------|-------|

|                                |       |
|--------------------------------|-------|
| Power Consumption (in Standby) | 0.5 W |
|--------------------------------|-------|

|                           |     |
|---------------------------|-----|
| Dynamic Backlight Control | Yes |
|---------------------------|-----|

|                   |     |
|-------------------|-----|
| Power Saving Mode | Yes |
|-------------------|-----|

## Measurements

|   |   |
|---|---|
| Dimension of TV without Stand (W x H x D) | 1686 x 969 x 72 mm / 66 1/2 x 38 1/4 x 2 7/8 inch |
|---|---|

|   |   |
|---|---|
| Dimension of Package Carton (W x H x D) | 1824 x 1114 x 187 mm / 71 7/8 x 43 7/8 x 7 3/8 inch |
|---|---|

---

## Weight

|                            |                   |
|----------------------------|-------------------|
| Weight of TV without Stand | 31.5 kg / 69.4 lb |
|----------------------------|-------------------|

---

|                                  |                 |
|----------------------------------|-----------------|
| Weight of Package Carton (Gross) | 43 kg / 94.8lb. |
|----------------------------------|-----------------|

---

## Accessories

|                               |                           |
|-------------------------------|---------------------------|
| Wall-Mount Adjuster (Bundled) | Yes (Depending on Region) |
|-------------------------------|---------------------------|

---

|                            |    |
|----------------------------|----|
| Table-Top Stand (Optional) | No |
|----------------------------|----|

---

## Further Information

Product Information Sheet <https://eprel.ec.europa.eu/qr/1393028>  
(Europe Only)

---

## Gallery

