

# HZC-RCP5

Camera Remote Control Software for HXC-FB80, HXC-P70, HXC-D70, HXC-100R/RF and HSC-300R/RF



## Overview

### **PC application software lowers the cost of remote control for multiple camera systems.**

The HZC-RCP5 application software provides remote control from a Windows PC\* for up to 5 system cameras in any of the HXC-FB80, HXC-P70\*\*, HSC-100R/RF and HSC-300R/RF working with the HXCU-FB80, HXCU-TX70\*\*\*, HSCU-300R and HSCU-300RF Camera Control Unit (CCU). It realizes very low cost control as a total system using LAN connection via a switching hub.

\* Supported OS is English language version of Windows 7, Windows 8.1, or Windows 10. (The HZC-RCP5 can be installed on other language version of Windows OS while showing the help menu in English.)

\*\* HXC-P70 can work either with or without CCU.

\*\*\* HXCU-TX70 works with CA-TX70 combined with camera head for triax cable connection.

(The CA-TX70 cannot be used for camcorder combination, but only for HXC system cameras.)

The very complete and easy to use GUI allows the user to control camera parameters as if he were using a RCP panel such as the RCP-1000, while offering more functionality on top of the multi camera operation. Unlike the RCP-1000, all the Paint parameters can be displayed and controlled in addition to the Scene File setting.

### **Activation key for pre-installed software.**

## Features

### **Remote control for up to 5 HXC and/or HSC system cameras**

The HZC-RCP5 application software provides remote control from a Windows PC for up to 5 system cameras in any of the HXC-FB80, HXC-P70, HSC-100R/RF and HSC-300R/RF working with the HXCU-FB80, HXCU-TX70, HSCU-300R and HSCU-300RF Camera Control Unit (CCU).

### **Camera paint adjustments presented on any size of PC screen with the latest Windows OS support**

The version 1.1 of HZC-RCP5 supports the latest Windows OS of 8.1 and 10 in addition to the Windows 7. The software gives powerful control of the camera system, with faster matching and control of all the cameras in the system. The GUI can be displayed on any size screen, including large projections for educational applications. The touch panel screen would be useful up on requirement.

### **A RCP-1500 Series Remote Camera Panel can control the multi system cameras along with HZC-RCP5.**

The PC based software application realizes a single RCP control for multi cameras which requires touch and feel operation. It can be also utilized for one of the RCP units connected to the any of CCU via 8-pin CCA cable. This can provide the low cost

solution as a total system since it used to need individual RCP for individual CCU one-by-one.

### **LAN connection via a switching hub**

The PC based software application provides very low cost control using a LAN connection via a switching hub with the CCU and RCP-1500 Series\*.

\* RCP-1000 Series or RM-B170 can be used with CNA-1, Camera Control Network Adaptor.

### **Powerful control of multiple camera parameters by Panel Screen and Paint Menu Screen modes**

Many of the paint parameters can be displayed and controlled. The software can present two different camera parameter modes:

#### **[ Panel Screen (Panel Mode) ]**

In this mode, the basic functions of a camera can be controlled by the GUI on the screen, similar to the control level found with an RCP-1000 series remote control panel.

#### **[ Paint Menu Screen (Menu Mode) ]**

In this mode, more detailed camera parameters and settings (i.e. Matrix, Knee, etc.) of the HXC-FB80, HXC-P70, HSC-100R/RF, and HSC-300R/RF camera can be displayed and controlled on the GUI.

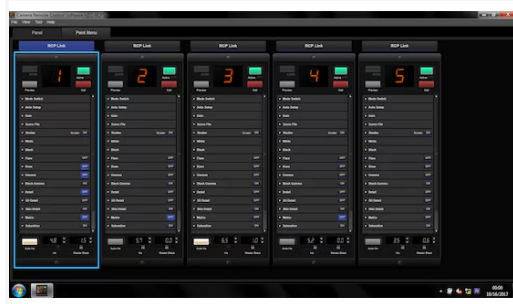
## Related products



### **HXC-FB80**

Three 2/3-inch Exmor™  
CMOS sensor HD colour  
studio camera

# Gallery



---

© 2004 - 2026 Sony Corporation. All rights reserved. Reproduction in whole or in part without written permission is prohibited. Features and specifications are subject to change without notice. The values for mass and dimension are approximate. All trademarks are the property of their respective owners.