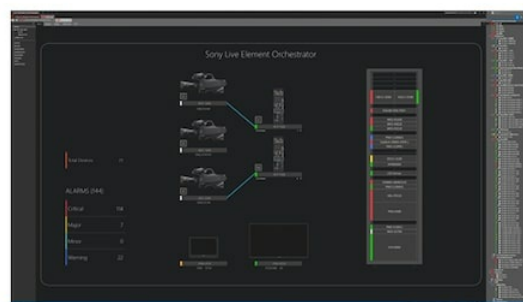


## PWA-LEO1 [Live Element Orchestrator]

System orchestration and management software for IP Live production.



**NETWORKED LIVE**

### Overview

Sony Live Element Orchestrator is a powerful orchestration application that increases the performance and utilization of resources, as well as reducing the system downtime - further improving productivity in content production.

This application provides overall system management of an IP-based production system - by supporting major industry protocols, both Sony and third-party solutions can be equally well supported.

Enabling resources to be shared across multiple locations, configurations to be set-up centrally and operations across all equipment to be monitored, the solution optimises system performance.

Sony developed its Live Element Orchestrator in collaboration with Skyline Communications (Belgium) adopting the company's DataMiner, an end-to-end management and orchestration solution, as a core technology.

DataMiner has been adopted by numerous media companies and organizations globally and is yet another collaboration which will offer further value and operability to broadcasters who are investing in IP-based Live production.

- Centralised Device Configuration & Setup  
[E.g. 4K / HD format change, Resource re-allocation in

system level

- Centralised Monitoring  
Monitor the entire system regardless of location
- Multi-vendor Support  
Able to support any 3rd party device, standard or proprietary
- Panel Operation  
Easy operation from software & hardware panels
- COTS Server  
Utilised with commercial available hardware
- Robustness  
Supports redundancy and clustering configuration
- Scalable  
Scalable from small system to large-scale deployment

## Specifications

### Specification Requirement

Processor	Intel Xeon or similar (Passmark CPU mark > 10000)
Memory	32GB (min. 16GB)
Hard Disk	Disk for OS: 600 GB SAS (10k RPM) (RAID 1, hot-pluggable) Disk for Cassandra database: 600 GB SAS (10k RPM) (RAID 1, hot-pluggable)

Network

Dual Ethernet interfaces  
recommended

Power Supply

Redundant (hot-pluggable)  
recommended

Supported OS

Windows Server 2016 Standard  
Edition

## Related products



NETWORKED LIVE

### **PWS-110NM1**

IP Live System  
Manager Station



NETWORKED LIVE

### **NXL-FR316**

SDI-IP signal  
processing unit



NETWORKED LIVE

### **XVS-8000**

4K/3G/HD multi-  
format IP-ready video  
switcher



NETWORKED LIVE

### **XVS-9000**

4K / 3G / HD multi-  
format IP-ready video  
switcher



NETWORKED LIVE

### **NXLK-IP50Y**

SDI-IP Converter  
Board with eight  
1.5/3G-SDI ports,  
supporting SMPTE ST  
2110 in HD/4K and  
HDR



NETWORKED LIVE

### **NXLK-IP51Y**

12G SDI-IP Converter  
Board with two  
1.5/3G-SDI and two  
12G-SDI ports,  
supporting SMPTE ST  
2110 in HD/4K and  
HDR



NETWORKED LIVE

### **PWSK-4509**

SMPTE ST 2110  
interface board for  
PWS-4500 live server

## Gallery

