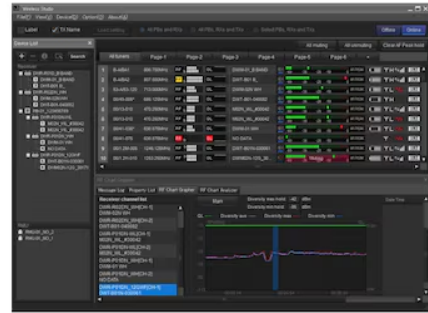


Wireless Studio



Overview

DWX series digital wireless system control software

Wireless Studio is a complete software package for controlling DWX Series receivers and wireless transmitters. It allows you to monitor and control a digital wireless system via a network. The digital wireless system can be accessed from up to six computers and allows you to set-up and initialise installation with up to 82 channels.

Easy set-up and RF control functions

Wireless Studio includes a channel plan adviser to help build a channel plan with channel scan to find co-existing channels with third party wireless systems. A status recorder records the RF levels and QLs and displays these in graphical form, allowing you to check or review the RF strength and quality rate over a long period of time. Enhanced functions on the control software now also allow for additional group control and load setting functions as well as muting control function that can be applied to all transmitters in the plan.

Features

Device monitoring

The software includes a status viewer for monitoring the operation statuses of the receivers, RMU-01 Remote Control Units, and transmitters. The status viewer allows you to monitor a list of information that is identical to the information that appears on the initial display of the receiver. The simple status viewer is also available for efficient monitoring of transmitter operation statuses. The simple status viewer narrows down the information displayed for each receiver channel to a certain few items, such as the RF meter, QL meter, and alerts, providing a more simplified view. In addition, the BC-DWX Viewer is available for monitoring and controlling battery chargers. The BC-DWX Viewer allows you to monitor the charging statuses of the batteries in each charger and configure the charge mode.

Device control function

The software allows you to control the receivers and the transmitters that are paired to each other. Control operations are performed from the Property window and the Property List tab. The Property window allows you to control a single receiver and its paired transmitter while viewing their operational statuses. The Property List tab allows you to display the settings of multiple receivers and transmitters in a list, and perform fast control operations such as applying the same settings to all the devices simultaneously.

Network interface setting function

This function is for network interface setting and gateway address setting of devices when using a Digital Wireless System with a router. Settings and proper connections allow Wireless Studio to detect DWR-R03D and BC-DWX1 on other network segments.

* To use this function, you need to upgrade DWR-R03D to ver1.30 and BC-DWX1 to ver1.10.

Channel plan advisor for easy set-up of a mixed system

Channel Plan Adviser allows you to select a channel plan while taking into account factors such as other TV broadcast waves (that you researched beforehand), frequencies used by other wireless devices in the area and frequencies detected via the channel scan.

Status recorder to control RF strength

The status recorder records the RF levels and QLs and displays these in graphical form, allowing you to check or review the RF strength and quality rate over a long period of time.

Error logging function

The software automatically saves log files of problems that occur during operation. You can review the error histories at a later time by using a text editor to view the stored log files.

Recalling stored settings and monitoring information

Information such as the setting values of devices and the arrangement of devices in the status viewer can be saved as a file with Wireless Studio. This can be recalled at any time by simply reloading these stored files. The setting values recalled in Wireless Studio can be applied to all the devices.

Pairing-assist function

The software includes a pairing wizard to assist in pairing, an operation that is necessary to enable remote control of transmitters via wireless remote control.

Save and analyse functions for signal environment timelines

The RF Chart Grapher function allows you to monitor and save the signal environment and alert information on a timeline and the RF Chart Analyzer function allows you to reference the files saved with the RF Chart Grapher.

Spectrum Analyser

The Spectrum Analyser tab allows you to perform a spectrum scan of a specified frequency band using the receivers. This allows you to visually confirm the existence of interference on the frequency bands in use.

In addition, if you configure the optimal groups and channels using Channel Plan Adviser beforehand, the Channel Plan Adviser settings can be applied to Spectrum Analyser. This allows you to visually confirm the existence of interference on the groups and channels recommended by Channel Plan Adviser.

Group control setting function

This window settings allows you to specify whether to display or hide the buttons that allow changing of receiver channel transmitter settings in groups or the shortcut buttons for "All muting", "All unmuting," and "Clear AF Peak hold", for example, in the status viewer.

Related products



DWR-R01D

2-channel digital diversity
rack-mount wireless receiver



DWR-R02D

Digital wireless receiver



DWR-R02DN

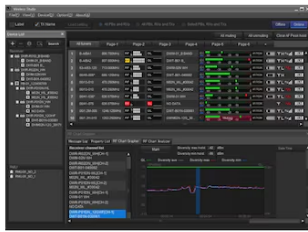
DWX series digital wireless
receiver



DWR-R03D

DWX Series 2-channel digital
wireless receiver

Gallery



© 2004 - 2026 Sony Corporation. All rights reserved. Reproduction in whole or in part without written permission is prohibited. Features and specifications are subject to change without notice. The values for mass and dimension are approximate. All trademarks are the property of their respective owners.