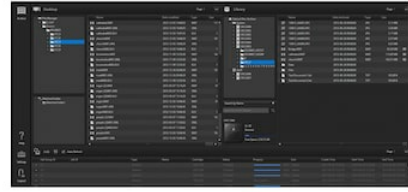


File Manager2

*Please contact your local sales representative for details.



Overview

Control for Optical Disc Archive PetaSite scalable library and ODS-L10 mini robotic library

After File Manager2 software is installed on a host computer, all operations are controlled with a web-based GUI from each client computer. It uses a simple Drag & Drop operation to archive and retrieve files and provides the opportunity for the user to add text metadata when archiving files.

File Manager2 software gives you the ability to archive/retrieve your content to/from ODS USB Drive series, ODS-L10 and ODS-L30M from a PC.

In addition, offline media searching is possible because FM2 records the file information to its own database.

Features

Control all library operations with a simple web-based GUI

After the File Manager2 software is installed on a host computer, all operations can be controlled with a web-based GUI, from each client computer. Using a simple drag & drop functionality to archive and retrieve files, File Manager2 also provides the opportunity for the user to add text metadata when archiving files.

Categorisation by cartridge

In the case of ODS-L10, it contains up to 10 cartridges as online

(total 15TB with ten ODC-1500R), and you can use different cartridges per category or user. Placeholder to archive together multiple files from different folders and add text metadata when archiving files.

Support all line-ups

File Manager2 can control both USB type standalone drive (ODS-D55U or ODS-D77U) and libraries (ODS-L10 or ODS-L30M).

Simplest solution for shelf archive

File Manager2 is able to search your cartridge even it's on shelves, as well as online cartridge in ODS-L10 or ODS-L30M.

Specifications

File Manager mode

Processor	CPU Intel Core i5 3 GHz or higher
-----------	-----------------------------------

Memory	8 GB
--------	------

HDD capacity	200 GB (Additional capacity of 4 TB/drive is required if archiving files from the local HDD or retrieving files to the local HDD)
--------------	--

OS

ODS-L10 or USB drive unit connection:

Windows 10 64-bit

ODS-L30M connection:

Windows Server 2012

Windows Server 2012 R2

Windows Server 2016

Interface

ODS-L10 connection:

Ethernet × 2 ports (for PC client connection and ODS-L10 connection) USB 3.0 ports (one for each drive)

ODS-L30M connection:

Ethernet × 1 port (for PC client connection and ODS-L30M connection) Fibre Channel HBA (Host Bus Adapter)

Drive unit direct connection:

Ethernet × 1 port (for PC client connection)
USB 3.0 ports (one for each drive)

File Server mode

Processor	CPU Intel Core i5 3 GHz or higher
Memory	8 GB
HDD capacity	200 GB + 4 TB/drive
OS	Windows Server 2012 Windows Server 2012 R2 Windows Server 2016
Interface	Same as File Manager mode

Related products



ODS-D55U

Optical Disc Archive standalone drive unit with transfer speeds 330 Mbps (read) and 210 Mbps (write-once disc) or 130 Mbps (rewritable disc)



ODS-D77UA

ODS-D77UA has very high transfer speeds. Read is 1.1Gbps. Write-once is 440 Mbps and Rewritable is 160 Mbps (verify on). Performance varies based on type of cartridge.



ODS-L30M

*Please contact your local sales representative for details.



ODS-L60E

*Please contact your local sales representative for details.



ODS-L100E

*Please contact your local sales representative for details.



Optical Disc Archive Software (Driver)

*Please contact your local sales representative for details.



ODS-D280U

Optical Disc Archive stand-alone drive with very high transfer speeds of 1Gbps write (verify on) and 2Gbps read using ODC-3300R Generation 2 cartridge



ODS-D280F

Optical Disc Archive fibre channel drive unit for the ODS-L30M/L60E/L100E PetaSite scalable library with very high transfer speeds of 1Gbps write (verify on) and 2Gbps read using ODC-3300R Generation 2 cartridge



ODS-D77F

Optical Disc Archive fibre channel drive unit for ODS-L30M PetaSite scalable library with transfer speeds up to 1,150 Mbps (read) and 780



File Server mode License for FM2

*Please contact your local sales



ODS-D380F

*Please contact your local sales representative for details.



ODS-D380U

*Please contact your local sales representative for details.

Mbps (write-once
disc) or 310 Mbps
(rewritable disc)

representative for
details.

Gallery

