

# **How to set ACES OUTPUT**

## **by VENICE and RAW Viewer**

### **VENICE**

#### **How to Set up the VENICE for ACES workflow**

VENICE should be set the following Rec format and Input Color Space for shooting.

##### VENICE Camera setting

AXS Rec format: RAW or X-OCN recording (AXS-R7 is required)

Input Color Space: S-Gamut3/S-Log3.

#### **How to handle VENICE materials in Post production**

In case of using RAW Viewer, please refer to next page and export Open EXR files.

In the case of using other post tools, please use IDT which will be released from Academy web site.

# RAW Viewer

## How to export ACES container

1. Latest software can be downloaded by following web page.

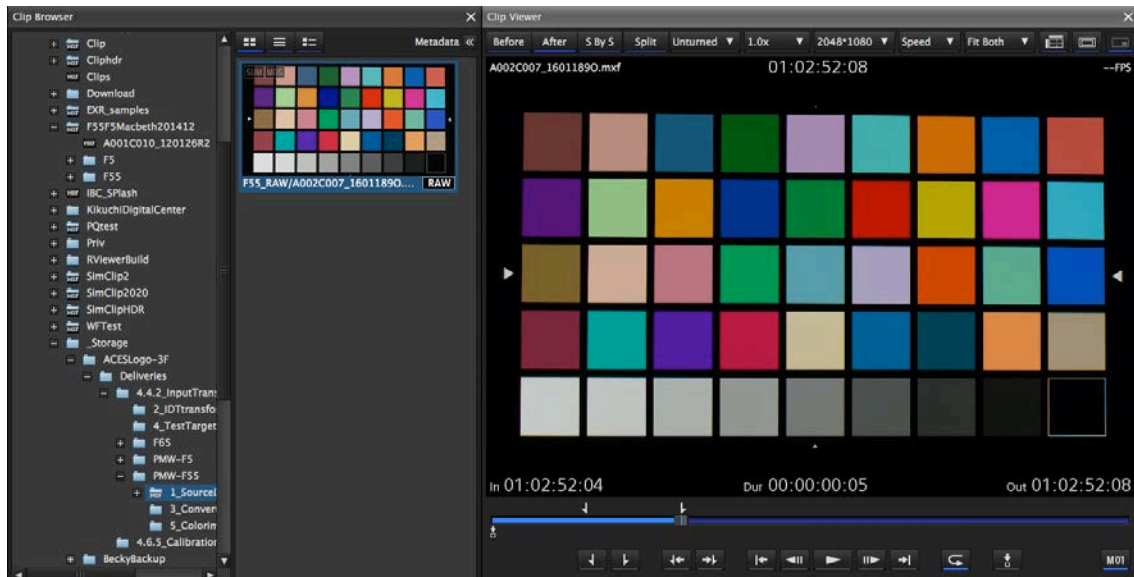
<http://www.sonycreativesoftware.com/rawviewer>

Please install this application for creating ACES file. Both Windows and Mac OS-X version is available.

Applicable software version: V3.3 or later

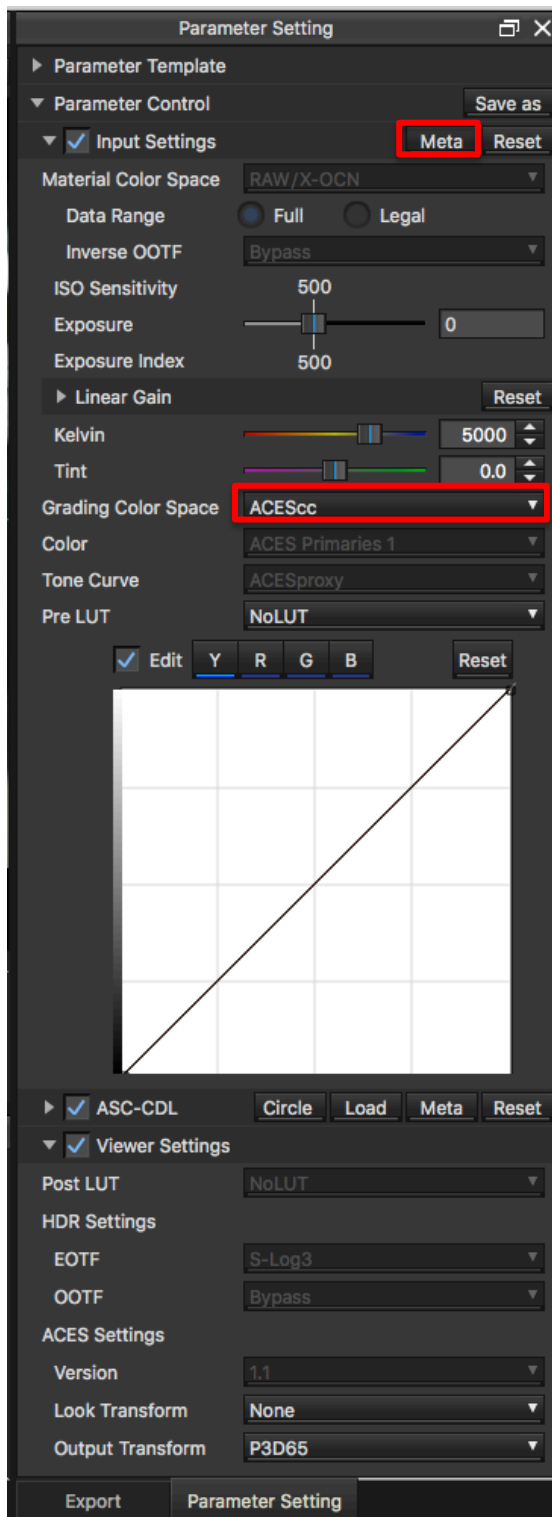
Release date: June, 2019

2. Open target clip using 'Clip Browser' Select in/out frames for export using 'Mark-In' and 'Mark-Out' using 'Clip Viewer'.



3. Select "Meta" button in Parameter Setting window and load camera setting of Exposure, White balance adjustment.

4. Select "ACEScc in Parameter Setting window. Appropriate IDT is applied automatically based metadata.



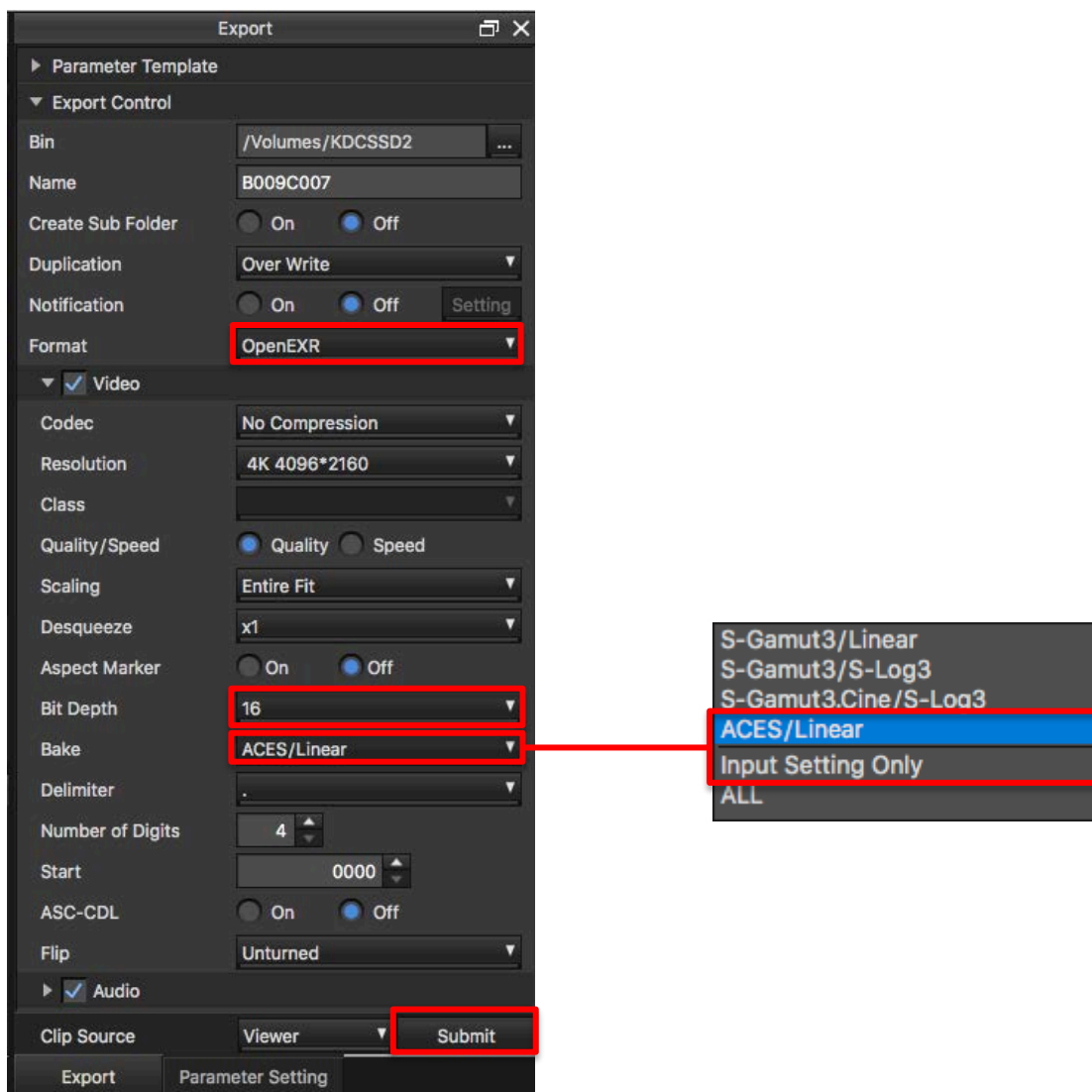
5. Set exporting directory, filename and other status in Export window.

6. Select "Open EXR" as Format in Export Control tab.

7. Select "16" bit as Bit Depth.

8. Select "ACES/Linear" on Bake selections if you want to export files with camera setting which has set on VENICE. Select "Input Setting Only" on Bake selections if you want to apply additional Exposure and white balance adjustment by RAW Viewer.

9. Push "Submit" button at the bottom in Export window and start exporting ACES container.



EOF