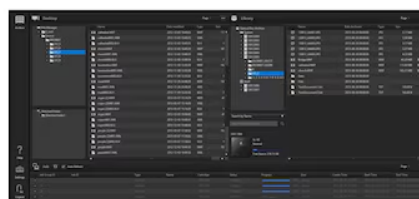


File Manager2

*Please contact your local sales representative for details.



Overview

Control for Optical Disc Archive PetaSite scalable library and ODS-L10 mini robotic library

After File Manager2 software is installed on a host computer, all operations are controlled with a web-based GUI from each client computer. It uses a simple Drag & Drop operation to archive and retrieve files and provides the opportunity for the user to add text metadata when archiving files.

File Manager2 software gives you the ability to archive/retrieve your content to/from ODS USB Drive series, ODS-L10 and ODS-L30M from a PC.

In addition, offline media searching is possible because FM2 records the file information to its own database.

Features

Control all library operations with a simple web-based GUI

After the File Manager2 software is installed on a host computer, all operations can be controlled with a web-based GUI, from each client computer. Using a simple drag & drop functionality to archive and retrieve files, File Manager2 also provides the opportunity for the user to add text metadata when archiving files.

Categorisation by cartridge

In the case of ODS-L10, it contains up to 10 cartridges as online (total 15TB with ten ODC-1500R), and you can use different cartridges per category or user. Placeholder to archive together multiple files from different folders and add text metadata when archiving files.

Support all line-ups

File Manager2 can control both USB type standalone drive (ODS-D55U or ODS-D77U) and libraries (ODS-L10 or ODS-L30M).

Simplest solution for shelf archive

File Manager2 is able to search your cartridge even if it's on shelves, as well as an online cartridge in ODS-L10 or ODS-L30M.

Specifications

File Manager mode	
Processor	CPU Intel Core i5 3 GHz or higher
Memory	8 GB
HDD capacity	200 GB (Additional capacity of 4 TB/drive is required if archiving files from the local HDD or retrieving files to the local HDD)

File Manager mode

OS	ODS-L10 or USB drive unit connection: Windows 10 64-bit ODS-L30M connection: Windows Server 2012 Windows Server 2012 R2 Windows Server 2016
Interface	ODS-L10 connection: Ethernet × 2 ports (for PC client connection and ODS-L10 connection) USB 3.0 ports (one for each drive) ODS-L30M connection: Ethernet × 1 port (for PC client connection and ODS-L30M connection) Fiber Channel HBA (Host Bus Adapter) Drive unit direct connection: Ethernet × 1 port (for PC client connection) USB 3.0 ports (one for each drive)

File Server mode

Processor	CPU Intel Core i5 3 GHz or higher
Memory	8 GB
HDD capacity	200 GB + 4 TB/drive
OS	Windows Server 2012 Windows Server 2012 R2 Windows Server 2016
Interface	Same as File Manager mode

Related products



ODS-D77UA

ODS-D77UA has very high transfer speeds. Read is 1.1Gbps. Write-once is 440 Mbps and Rewritable is 160 Mbps (verify on). Performance varies based on type of cartridge.



ODS-L30M

*Please contact your local sales representative for details.



ODS-L60E

*Please contact your local sales representative for details.



ODS-L100E

*Please contact your local sales representative for details.



Optical Disc Archive Software (Driver)

*Please contact your local sales representative for details.



ODS-D280U

Optical Disc Archive stand-alone drive with very high transfer speeds of 1Gbps write (verify on) and 2Gbps read using ODC-3300R Generation 2 cartridge



ODS-D280F

Optical Disc Archive fiber channel drive unit for the ODS-L30M/L60E/L100E PetaSite scalable library with very high transfer speeds of 1Gbps write (verify on) and 2Gbps read using ODC-3300R Generation 2 cartridge



ODS-D380F

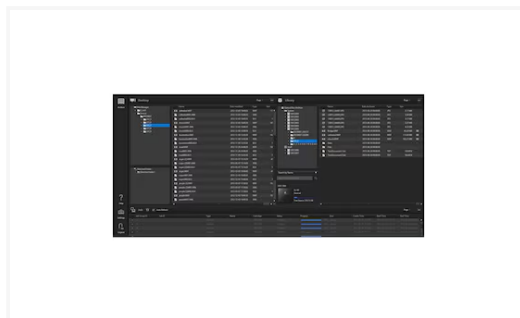
*Please contact your local sales representative for details.



ODS-D380U

*Please contact your local sales representative for details.

Gallery



© 2004 - 2026 Sony Corporation. All rights reserved. Reproduction in whole or in part without written permission is prohibited. Features and specifications are subject to change without notice. The values for mass and dimension are approximate. All trademarks are the property of their respective owners.