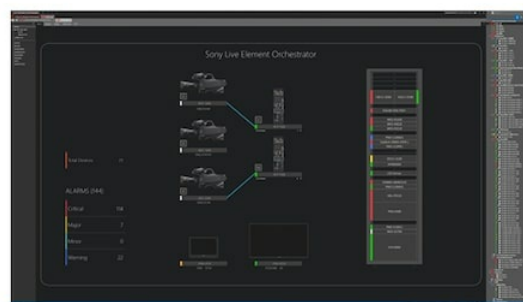


PWA-LEO1 [Live Element Orchestrator]

System orchestration and management software for IP Live production.



NETWORKED LIVE

Overview

Sony Live Element Orchestrator is a powerful orchestration application that increases the performance and utilization of resources, as well as reducing the system downtime—further improving productivity in content production.

This application provides overall system management of an IP-based production system—by supporting major industry protocols, both Sony and third-party solutions can be equally well supported.

Enabling resources to be shared across multiple locations, configurations to be set up centrally, and operations across all equipment to be monitored, the solution optimizes system performance.

Sony developed its Live Element Orchestrator in collaboration with Skyline Communications (Belgium) adopting the company's DataMiner, an end-to-end management and orchestration solution, as a core technology.

DataMiner has been adopted by numerous media companies and organizations globally and is yet another collaboration which will offer further value and operability to broadcasters who are investing in IP-based Live production.

- Centralized Device Configuration & Setup [E.g. 4K/HD format change, Resource re-allocation in

system level

- Centralized Monitoring
Monitor the entire system regardless of location
- Multi-vendor Support
Able to support any third-party device, standard or proprietary
- Panel Operation
Easy operation from software & hardware panels
- COTS Server
Utilized with commercial available hardware
- Robustness
Supports redundancy and clustering configuration
- Scalable
Scalable from small system to large-scale deployment

Specifications

Specification Requirement

Processor	Intel Xeon or similar (Passmark CPU mark > 10,000)
Memory	32 GB (min. 16 GB)
Hard Disk	Disk for OS: 600 GB SAS (10,000 RPM) (RAID 1, hot-pluggable) Disk for Cassandra database: 600 GB SAS (10,000 RPM) (RAID 1, hot-pluggable)

Network

Dual Ethernet interfaces
recommended

Power Supply

Redundant (hot-pluggable)
recommended

Supported OS

Windows Server 2016 Standard
Edition

Related products



NETWORKED LIVE

PWS-110NM1

IP Live System
Manager Station



NETWORKED LIVE

NXL-FR316

SDI-IP signal
processing unit



NETWORKED LIVE

XVS-8000

4K/3G/HD multi-
format IP-ready video
switcher



NETWORKED LIVE

XVS-9000

4K/3G/HD multi-
format IP-ready video
switcher



NETWORKED LIVE

NXLK-IP50Y

SDI-IP Converter
Board with eight
1.5/3G-SDI ports,
supporting SMPTE ST
2110 in HD/4K and
HDR



NETWORKED LIVE

NXLK-IP51Y

12G SDI-IP Converter
Board with two
1.5/3G-SDI and two
12G-SDI ports,
supporting SMPTE ST
2110 in HD/4K and
HDR



NETWORKED LIVE

PWSK-4509

SMPTE ST 2110
interface board for
PWS-4500 live server

Gallery

